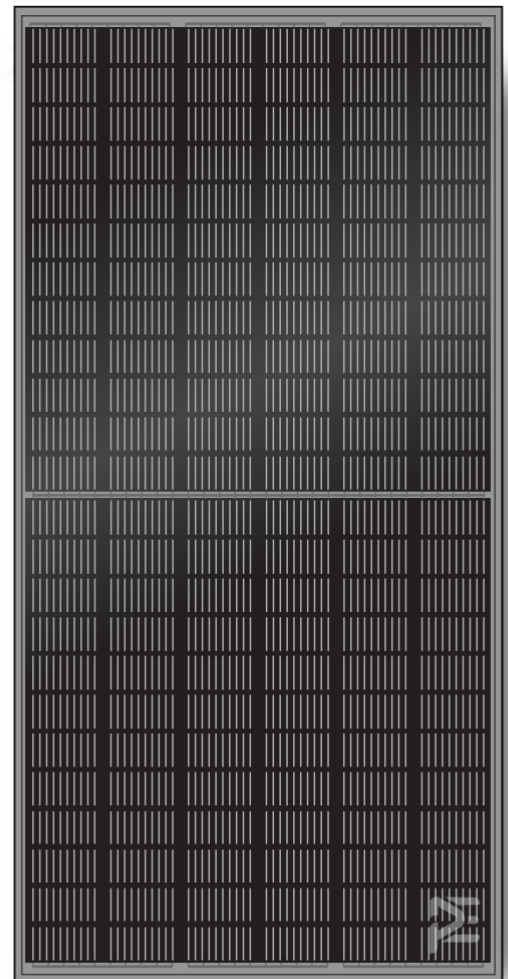




144 CELL SOLAR PV MODULE MONO PERC



Introduction

Assembled with high-efficiency Multi-busbar PERC cells, the half-cell configuration of the modules offers the advantage of higher power output, better temperature-dependent performance, reduced shading effect on the energy generation, lower risk of hot spot, as well as enhanced tolerance for mechanical loading.

500-550 W



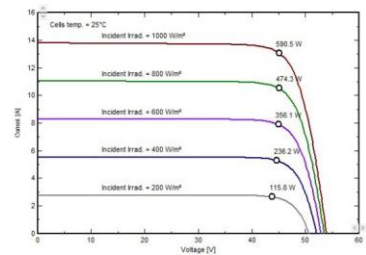
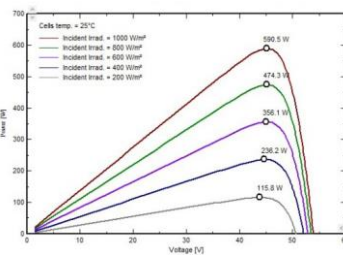
ELECTRICAL CHARACTERISTICS

Module Type	PE-500HM	PE-505HM	PE-510HM	PE-515HM	PE-520HM
Maximum Power (Pmp)	500	505	510	515	520
Open Circuit Voltage (Voc)	49.08	49.12	49.16	49.20	49.24
Short Circuit Current (Isc)	12.80	12.92	13.03	13.15	13.26
Maximum Power Voltage (Vmp)	41.60	41.64	41.68	41.72	41.76
Maximum Power Current (Imp)	12.02	12.13	12.24	12.34	12.45
Module Efficiency (η_m)	19.35	19.54	19.73	19.93	20.12
Power Tolerance	(-0, +5W)				
Maximum System Voltage	1500				
Maximum Series Fuse Rating	25A				

Module Type	PE-525HM	PE-530HM	PE-535HM	PE-540HM	PE-545HM	PE-550HM
Maximum Power (Pmp)	525	530	535	540	545	550
Open Circuit Voltage (Voc)	49.28	49.32	49.36	49.40	49.44	49.48
Short Circuit Current (Isc)	13.38	13.49	13.60	13.72	13.83	13.95
Maximum Power Voltage (Vmp)	41.80	41.84	41.88	41.92	41.96	42.00
Maximum Power Current (Imp)	12.56	12.67	12.78	12.89	12.99	13.10
Module Efficiency (η_m)	20.31	20.51	20.70	20.89	21.09	21.28
Power Tolerance	(-0, +5W)					
Maximum System Voltage	1500					
Maximum Series Fuse Rating	25A					

Irradiance 1000 W/m² module temperature 25 °C AM=1.5

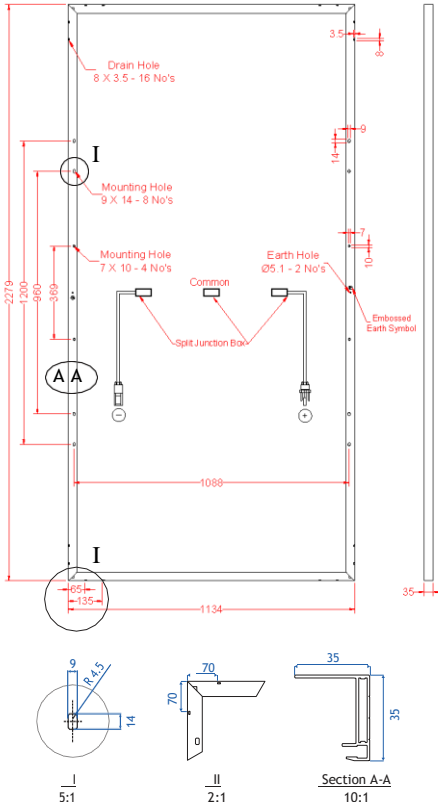
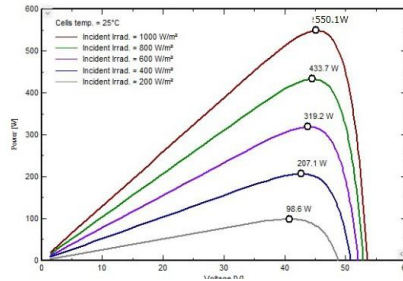
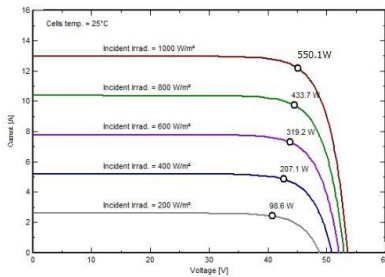
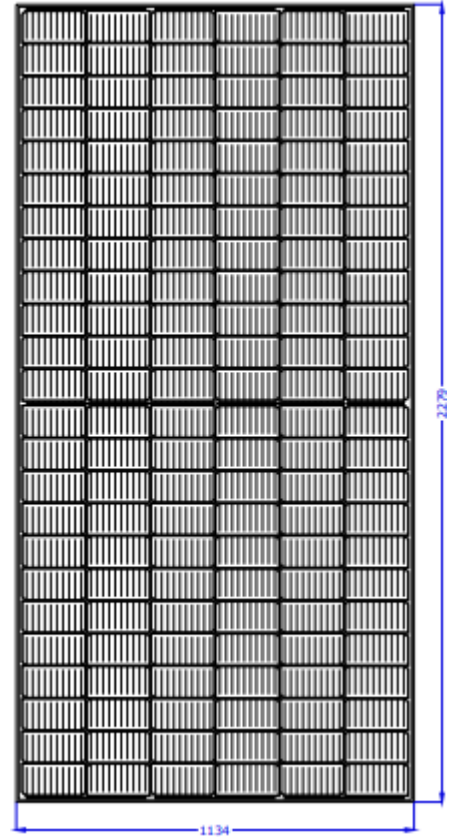
First Year Degradation	<2%
Year 2-25 Power Degradation	0.55%
Lower Operating Temperature	HALF-CELL



**144 Cell Solar PV Module - Mono Perc
500-550 W Pmp**

TEMPERATURE CHARACTERISTICS

Pmax Temperature Coefficient	- 0.35% / °C
Voc Temperature Coefficient	- 0.3% / °C
Isc Temperature Coefficient	0.06% / °C
Operating Temperature	-40 °C TO +85 °C
Nominal Operating Cell Temperature	45 ± 2 °C



MECHANICAL SPECIFICATIONS

External Dimensions	2279 x 1134 x 35 mm
Weight	29 kg
Solar Cells	Mono PERC-crystalline 91mm x 182mm
Front Glass	3.2mm, High Transmission, Low Iron, Tempered Glass
Frame	Anodized Aluminium Alloy
Junction Box	3 Split, IP68 Rated
Connector	MC4 Compatible
Mechanical Load	5400 Pa for Snow Load, 2400 Pa Wind Load
Output Cable	4.0 mm ² , Portrait: (-)350mm and (+)160mm in Length Landscape: (-)1400 mm and (+)1400 mm in Length or Customized Length

PACKING CONFIGURATION

Container	20' GP	40' GP
Pieces per Pallet	31	31
Pallets per Container	8	18
Pieces per Container	248	500

For more details, please consult Premier Energies.